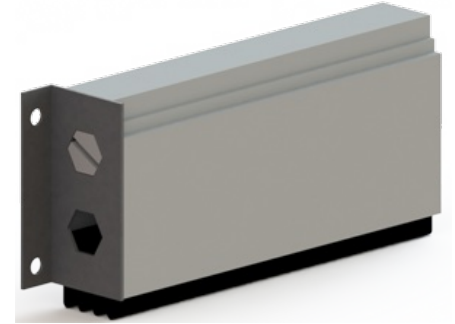


## 747S

### Automatic Door Bottom Heavy Duty Surface Mount

#### Notes:

- Furnished exact length as stated. May be trimmed for fitting (2" maximum).
- Available in lengths of 24" to 48"
- Furnished with mortise types and surface mount types
- DBA/GLD end caps available on MIL and CLR finish



## PRODUCT SPECIFICATIONS

#### FINISHES:

- MIL, DBA, CLR

#### INSERTS:

- N = Neoprene, EDPM or TPE

#### MAX. DROP:

- 3/4" (19.1 mm)

#### CATEGORY:

- J, H

#### FASTENERS:

- #8 x 1-1/4" Pan head sheet metal screws furnished with surface mount types.
- #6 x 5/8" Pan head sheet metal screws furnished with mortise types.

#### SIZE:

- 7/8" x 1-13/16" (23 mm x 47 mm)