



**MISCELLANEOUS**



**301D  
Residential Stop**

Certification: Meets ANSI A156.16 for L02223  
 Materials: Wrought steel with rubber bumpers  
 Finishes: 2C, US3  
 Notes:
 

- Works with 1/4" (6 mm) and 5/16" ( 8 mm) hinge pins
- For use where standard door stops are not desirable
- Positive slip proof design
- Adjustable from 70 degrees to 100 degrees
- Must purchase an NRP hinge for use with this pinstop



**303W  
Handrail Bracket**

Certification: Meets ANSI A156.16 for L03061  
 Base Diameter: 3-5/32" (80 mm)  
 Base to Center of Rail: 2-3/4" (70 mm)  
 Materials: Brass  
 Finishes: US3, US4, US10, US10B, US15A, US19, US26, US26D  
 Fasteners: Three (3) #10 x 1-1/4" FPHWS, three (3) plastic anchors, three (3) 10-24 x 13/16" FPHMS, and three (3) 10-24 lead anchors



**305D  
Wire Pull**

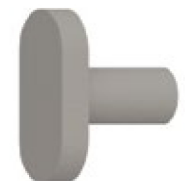
Certification: Meets ANSI A156.9 for B02011  
 Diameter of Rod: 5/16" (7.9 mm)  
 Projection: 1-9/32" (32.5 mm)  
 CTC Lengths: 3" (76 mm), 3-1/2" (89 mm), 4" (102 mm)  
 Materials: Brass  
 Finishes: US3, US4, US10, US10B, US26, US26D  
 Fasteners: Two (2) 8-32 x 1" TPHMS



**307D  
Door Silencer**

Certification: Meets ANSI A156.16 for L03011  
 Diameter: 1/2" (13 mm)  
 Projection: 1/8" (3 mm)  
 Materials: Rubber  
 Notes:
 

- For use with metal frames
- Proper installation eliminates door rattle and provides constant tension for door latches or locks



**308D  
Door Silencer**

Certification: Meets ANSI A156.16 for L0302  
 Projection: 9/64" (3.5 mm)  
 Base: 3/8" x 3/4" (9.5 mm x 19 mm)  
 Length: 3/4" (19 mm)  
 Materials: Rubber  
 Notes:
 

- For use with wood frames
- Eliminates door rattle when door is latched
- Proper installation eliminates door rattle and provides constant tension for door latches or locks