

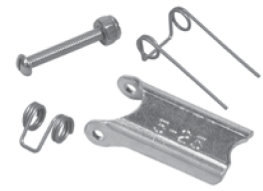
Latch Kits for Non-Integrated Hooks

Campbell offers latches already assembled to the hook as well as kits for field installation.

- Clapper latches are zinc-plated
- Spring spacer adapts latch to hooks with narrow cam
- Bolt and nut permit fast, easy installation



**916-G LATCH KIT
FOR CAMPBELL HOOK**

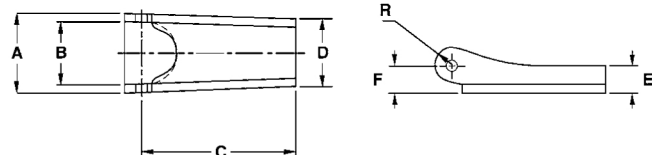


**916-U UNIVERSAL
LATCH KIT –
FOR ALL MAJOR HOOK BRANDS**

READ AND UNDERSTAND THESE WARNINGS AND INSTRUCTIONS BEFORE USING HOOK AND LATCH.

IMPORTANT: Instructions For Use

1. Always inspect the hook and latch before using.
2. Always make sure the spring forces the latch against the point of the hook.
3. Check the load before lifting to make sure the hook (not the latch) is supporting the load.
4. To assemble latches on hooks, follow instructions supplied with kit.



NOTE: Latches listed on this page cannot be used on Campbell's current design of integrated Sling and Hoist hooks. Please refer to the appropriate catalog pages for these hooks for proper replacement latch kits.

| Size in. | mm | Size No. | 916-G Kit | | Universal Kit | | Dimensions | | | | | | | | | | | | | | Weight/ 100 | |
|-------------|----|-------------|-------------|-------------------|---------------|-------------------|------------|----|---------|----|---------|-----|--------|----|------|----|-------|----|-------|----|----------------|----|
| | | | Cat. No. | UPC No. 020418 | Cat. No. | UPC No. 020418 | A | | B | | C | | D | | E | | F | | R | | lb | kg |
| 1/4 | 6 | 2-22 | 3990101 | 072727 | 3991401 | 177088 | 23/32 | 18 | 9/16 | 14 | 1 1/4 | 32 | 5/8 | 16 | 1/4 | 6 | 1/4 | 6 | 5/32 | 4 | 3.3 | 1 |
| 5/16 | 8 | 3-23 | 3990201 | 072734 | 3991402 | 177095 | 23/32 | 18 | 9/16 | 14 | 1 3/8 | 39 | 39/64 | 16 | 1/4 | 6 | 1/4 | 6 | 5/32 | 4 | 3.7 | 2 |
| -- | -- | 4-24 | 3990301 | 072741 | 3991403 | 177101 | 15/16 | 24 | 25/32 | 20 | 1 17/32 | 43 | 15/16 | 24 | 9/32 | 7 | 9/32 | 7 | 3/16 | 5 | 5 | 2 |
| 3/8 | 10 | 5-25 | 3990401 | 072758 | 3991404 | 177118 | 15/16 | 24 | 25/32 | 20 | 1 11/16 | 43 | 15/16 | 24 | 9/32 | 7 | 9/32 | 7 | 3/16 | 5 | 5.6 | 3 |
| -- | -- | 6-26 | 3990501 | 072765 | -- | -- | 15/16 | 24 | 25/32 | 20 | 1 31/32 | 50 | 15/16 | 24 | 9/32 | 7 | 9/32 | 7 | 3/16 | 5 | 6.2 | 3 |
| 7/16 | 11 | 7-27 | 3990601 | 072772 | 3991405 | 177125 | 15/16 | 24 | 25/32 | 20 | 1 7/8 | 48 | 15/16 | 24 | 9/32 | 7 | 9/32 | 7 | 3/16 | 5 | 6.5 | 3 |
| -- | -- | 8-28 | 3990701 | 072789 | -- | -- | 1 9/32 | 32 | 1 | 25 | 2 3/8 | 60 | 1 9/32 | 32 | 3/8 | 10 | 9/16 | 14 | 17/64 | 7 | 12 | 5 |
| 1/2 | 13 | 9-29 | 3990801 | 072796 | 3991406 | 177132 | 1 9/32 | 32 | 1 | 25 | 2 11/16 | 68 | 1 9/32 | 32 | 3/8 | 10 | 9/16 | 14 | 17/64 | 7 | 16.5 | 7 |
| -- | -- | 10-30 | 3990901 | 072802 | -- | -- | 1 9/32 | 32 | 1 | 25 | 2 31/32 | 75 | 1 9/32 | 32 | 3/8 | 10 | 9/16 | 14 | 17/64 | 7 | 18.2 | 8 |
| 5/8 | 16 | 11-31 | 3991001 | 072819 | 3991407 | 177149 | 1 9/32 | 32 | 1 | 25 | 3 7/32 | 82 | 1 9/32 | 32 | 3/8 | 10 | 9/16 | 14 | 17/64 | 7 | 36 | 16 |
| -- | -- | 12-32 | 3991101 | 072826 | 3991408 | 177156 | 2 | 51 | 1 17/32 | 39 | 3 7/16 | 87 | 1 5/8 | 41 | 9/16 | 14 | 23/32 | 18 | 3/8 | 10 | 52 | 24 |
| -- | -- | 34 | -- | -- | 3991409 | 177163 | 2 3/16 | 56 | 1 3/4 | 45 | 4 11/32 | 110 | 1 3/4 | 45 | 9/16 | 14 | 11/16 | 18 | 13/32 | 10 | 70.7 | 32 |

WARNING

- Failure to follow the Instructions For Use and these warnings may cause death or serious injury.
- Loads may disengage from hook if proper procedures are not followed.
- A falling load may cause serious injury or death.
- The load must never be supported by the latch.
- Latches must always be inspected for wear or damage before use. If worn, distorted or damaged, discard and replace.
- Always stand clear of loads being lifted.