

SUBMITTAL: LP- 4 SAFETY POST FOR LADDERS

The LP- 4 Safety Post provides a convenient and safe method of climbing off and onto fixed access ladders.

Easy to Install: The LP- 4 Safety Post comes pre-assembled and attaches directly to the top two rungs square or round with two U-shaped bolts.

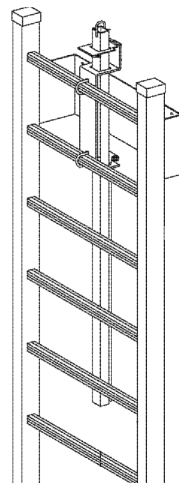
Easy to Use: When at the top of the ladder extend the safety post. The spring coil allows user to lift with just one hand. Step on or off the ladder in a safe standing position while holding onto the post. A latch maintains the post at variable heights and is easily released for retracting the pole. Pull up loop provided at the top (not for use with safety harness)

Safety features: Include a square post for a no slip grip. We recommend a [Saf-T-Hatch](#) rail system in addition to the Safety Post for greater safety.

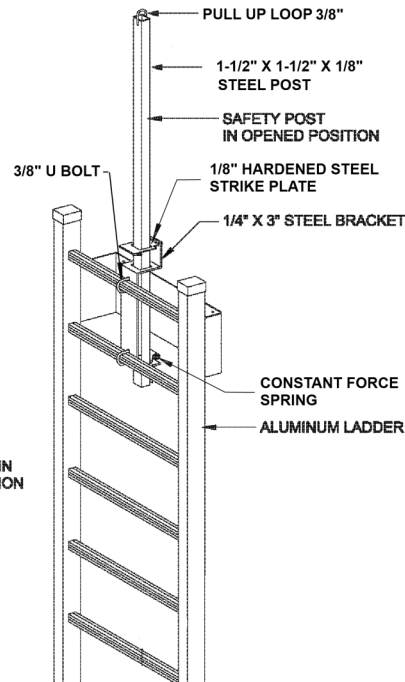
Weight: 25 lbs.

Finish: Powder-Coat Paint - Safety Yellow. (See LP-5 for Galvanized finish.)

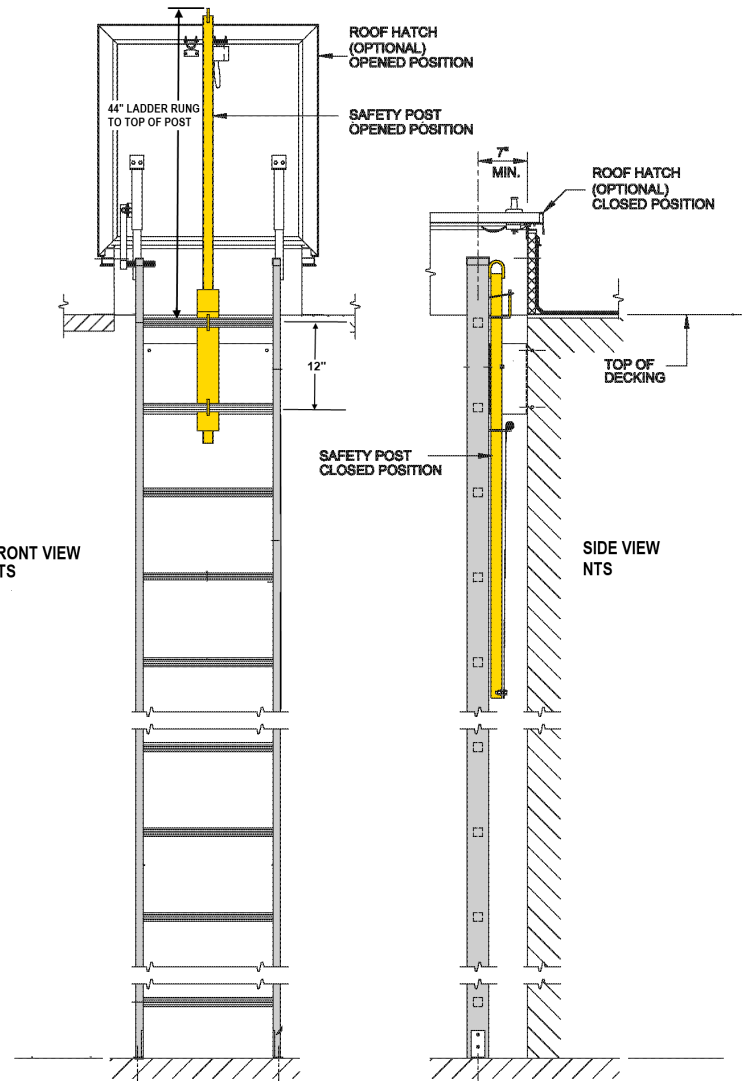
Compliance:
Meets OSHA1910.27 minimum design live load of 200 pounds and ANSI A14.3 for fixed ladder extension of 3ft 6in above landing.




SAFETY POST AND BRACKET IN CLOSED POSITION

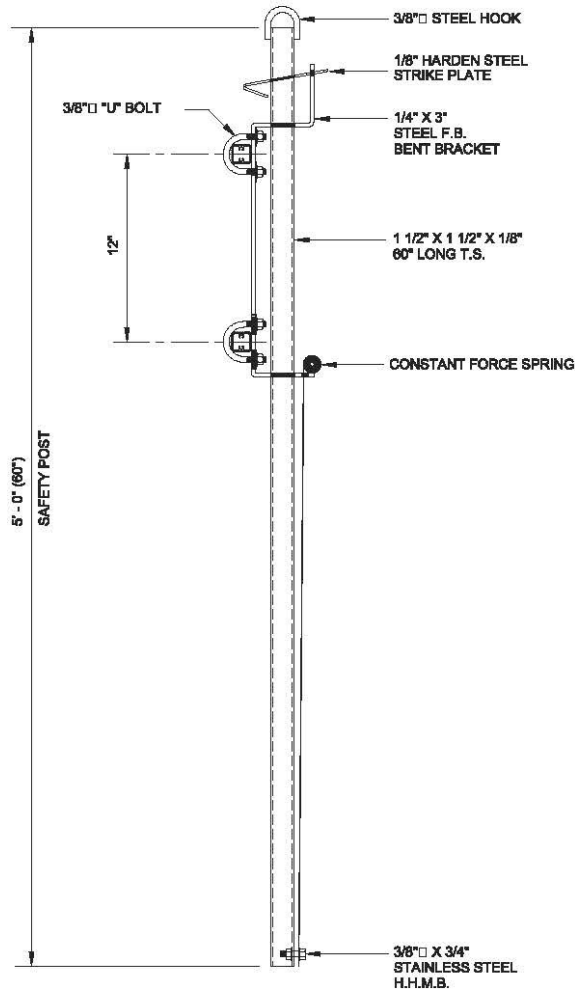


FRONT VIEW NTS

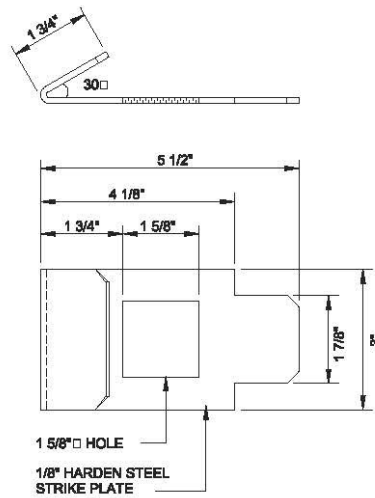


 <p>ACTIVAR INC. CONSTRUCTION PRODUCTS GROUP LP-4 IS A TRADEMARK OF ACPG</p> <p>PLEASE DOWNLOAD MOST CURRENT SUBMITTAL FROM WEBSITE BEFORE ORDERING</p>	Distributor:	Quantity:
	Contractor:	Approved By:
	Model #:	Architect:
	Project:	Date:

HEADQUARTERS: 9702 NEWTON AV S, BLOOMINGTON, MN 55431 PH: 800-554-6077 FAX: 952-835-2218 EMAIL: SALES@ACTIVARCPG.COM WWW.ACTIVARCPG.COM
 MANUFACTURING: COMMERCE, CA & BLOOMINGTON MN • WAREHOUSES: LANCASTER PA, ATLANTA GA, CHICAGO IL, SEATTLE WA, DALLAS TX, OMAHA NE, FARGO ND, FT MYERS FL 3/21/117



SAFETY POST
 1" = 1' - 0"



STRIKE PLATE
 3" = 1' - 0"

