

SUBMITTAL: LP- 5 SAFETY POST FOR LADDERS

The LP- 5 Safety Post provides a convenient and safe method of climbing off and onto fixed access ladders.

Easy to Install: The LP- 5 Safety Post comes pre-assembled and attaches directly to the top two rungs square or round with two U-shaped bolts.

Easy to Use: When at the top of the ladder extend the safety post. The spring coil allows user to lift with just one hand. Step on or off the ladder in a safe standing position while holding onto the post. A latch maintains the post at variable heights and is easily released for retracting the pole. Pull up loop provided at the top (not for use with safety harness)

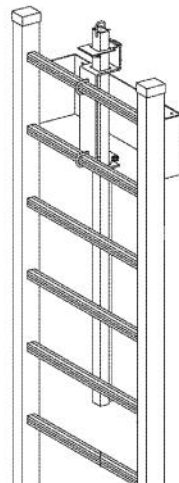
Safety features: Include a square post for a no slip grip. We recommend a [Saf-T-Hatch](#) rail system in addition to the Safety Post for greater safety.

Weight: 25 lbs.

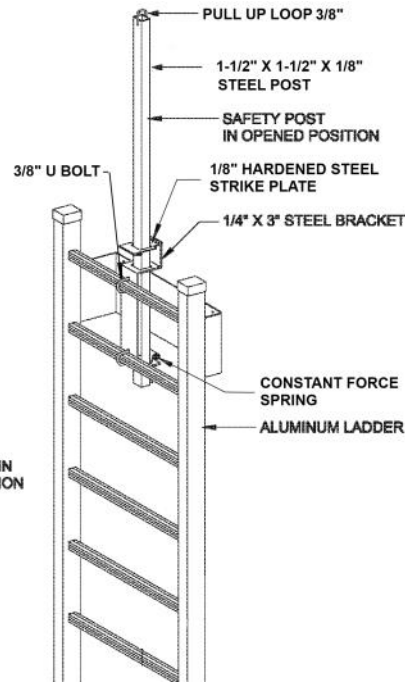
Finish: Hot dip galvanized. (See LP-4 for Powder-Coat Painted Safety Yellow Finish)

Compliance:

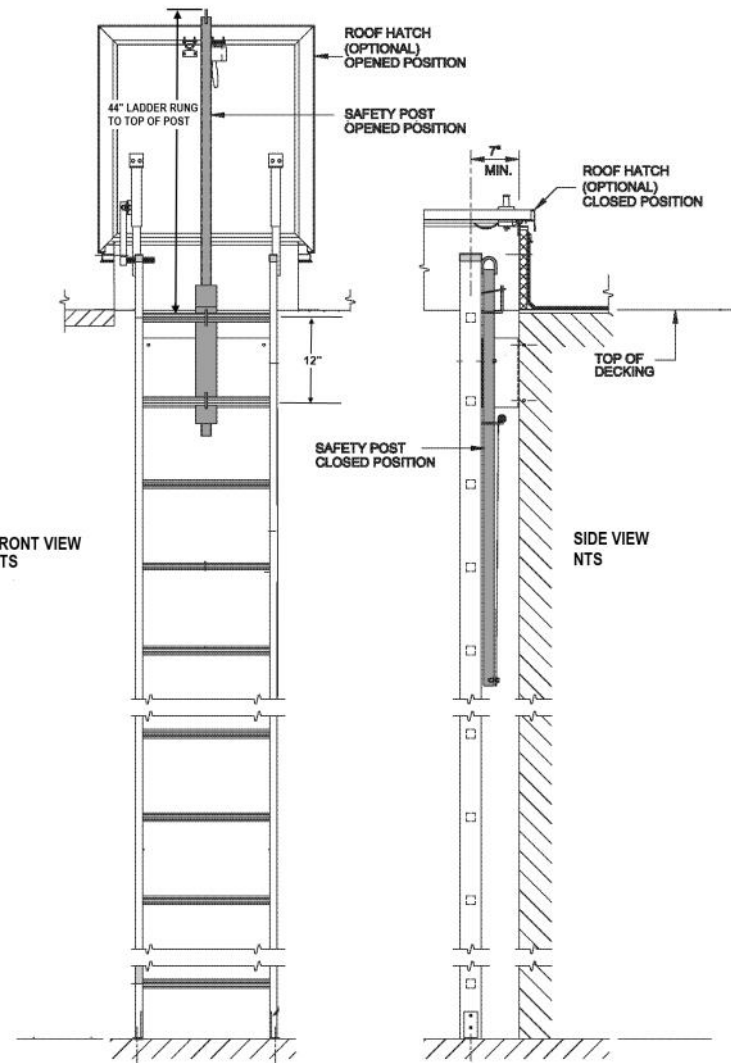
Meets OSHA 1910.23 (d)(7) grab bars extending 42" above the access level or landing platforms served by the ladder when installed as recommended.




SAFETY POST AND BRACKET IN CLOSED POSITION



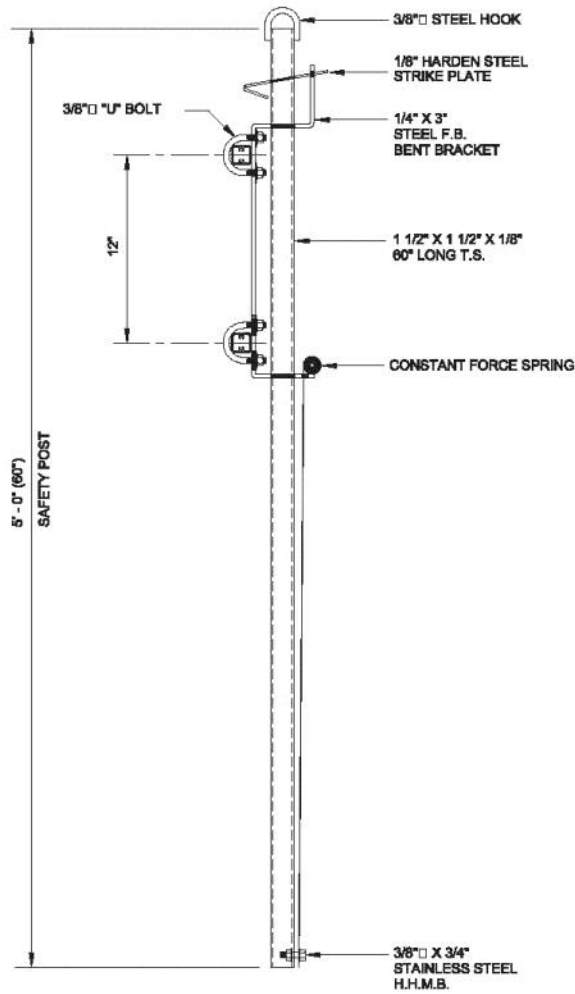
FRONT VIEW NTS



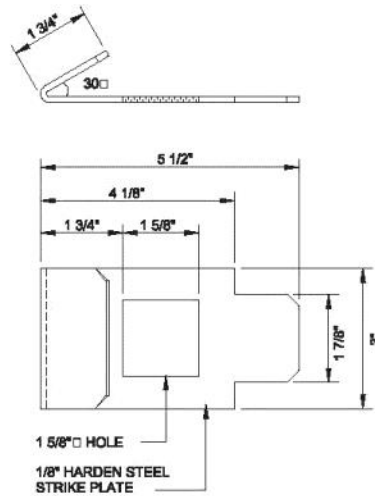
SIDE VIEW NTS

| | | |
|---|--------------|--|
|  <p>ACTIVAR INC. CONSTRUCTION PRODUCTS GROUP</p> <p>LP-4 IS A TRADEMARK OF ACPG</p> <p>PLEASE DOWNLOAD MOST CURRENT SUBMITTAL FROM WEBSITE BEFORE ORDERING</p> | Distributor: | Quantity: |
| | Contractor: | Approved By: |
| | Model #: | Architect:: |
| | Project: | Date: © 2018 Activar Construction Products Group, Inc. |
| <p>HEADQUARTERS: 9702 NEWTON AV S, BLOOMINGTON, MN 55431 PH: 800-554-6077 FAX: 952-835-2218 EMAIL: SALES@ACTIVARCPG.COM WWW.ACTIVARCPG.COM</p> <p>MANUFACTURING: COMMERCE, CA & BLOOMINGTON MN • WAREHOUSES: LANCASTER PA, ATLANTA GA, CHICAGO IL, SEATTLE WA, DALLAS TX, OMAHA NE, FARGO ND, FT MYERS FL 1/23/2018</p> | | |

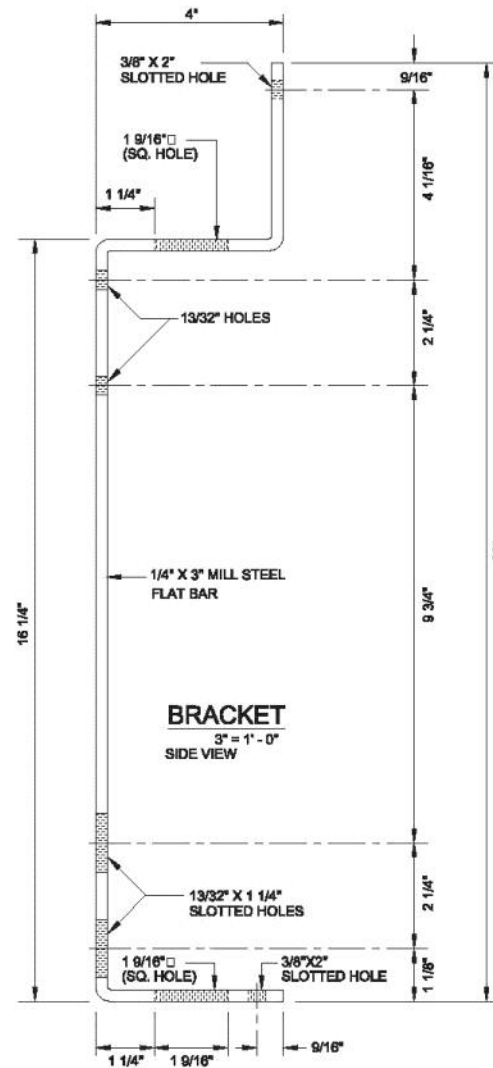
SUBMITTAL: LP- 5 SAFETY POST FOR LADDERS



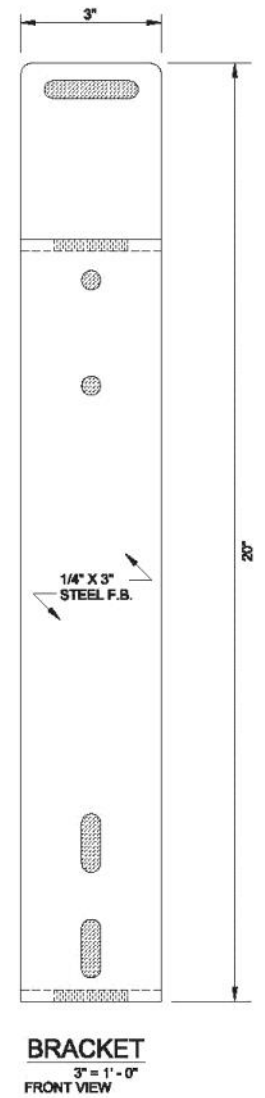
SAFETY POST
1" = 1' - 0"



STRIKE PLATE
3" = 1' - 0"



BRACKET
3" = 1' - 0"
SIDE VIEW



BRACKET
3" = 1' - 0"
FRONT VIEW