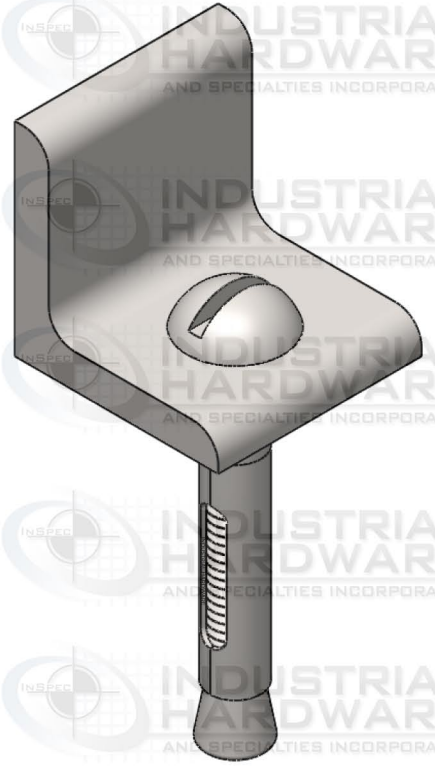
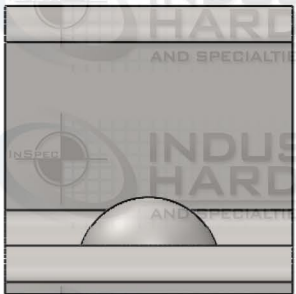
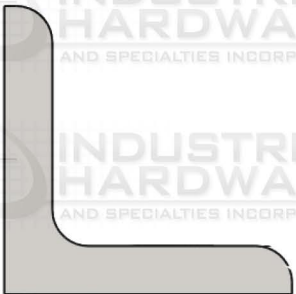
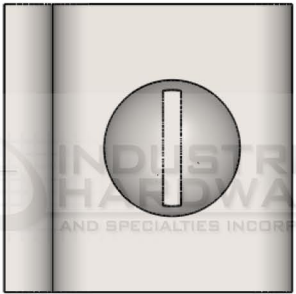


ZONE		REV.	REVISIONS DESCRIPTION	DATE	APPROVED



5/16"


3/8"

3-3/4"

**PROPRIETARY AND CONFIDENTIAL**

THIS DRAWING AND ITS CONTENT IS THE SOLE PROPERTY OF INDUSTRIAL HARDWARE & SPECIALTIES, INCORPORATED.

ANY REPRODUCTION IN PART OR AS A WHOLE WITHOUT THE WRITTEN PERMISSION OF INDUSTRIAL HARDWARE & SPECIALTIES, INC. IS STRICTLY PROHIBITED. INSPEC AND TOSPEC INDICIA ARE REGISTERED AND PROTECTED TRADEMARKS WITH THE UNITED STATES PATENT & TRADEMARK OFFICE. MODIFICATION, USE OR REMOVAL WITHOUT WRITTEN AUTHORIZATION WILL BE DEEMED AN INTENTIONAL VIOLATION OF COPYRIGHT PROTECTIONS.

DIMENSIONS ARE IN INCHES TOLERANCES: FRACTIONAL $\pm 1/64"$ ANGULAR: MACH $\pm 1^\circ$ BEND $\pm 1^\circ$ TWO PLACE DECIMAL $\pm .01"$ THREE PLACE DECIMAL $\pm .005"$ CONCENTRICITY T.I.R. = $.005"$		NAME	DATE	 <b>INDUSTRIAL HARDWARE</b> AND SPECIALTIES INCORPORATED 17-B Kentucky Avenue Paterson, New Jersey 07503 T: 973-684-4010 F: 973-684-3095 e-mail: sales@industrialhardware.com www.industrialhardware.com SIZE DWG. NO. <b>A</b> 20A-1L13 SCALE: 1:2 WEIGHT: SHEET 1 OF 1
DRAWN CHECKED ENG APPR. MFG APPR. Q.A.	MATERIAL <b>Steel</b> FINISH <b>Zinc CR+3 (RoHS)</b>	COMMENTS:		
NEXT ASSY	USED ON	APPLICATION		
DO NOT SCALE DRAWING				