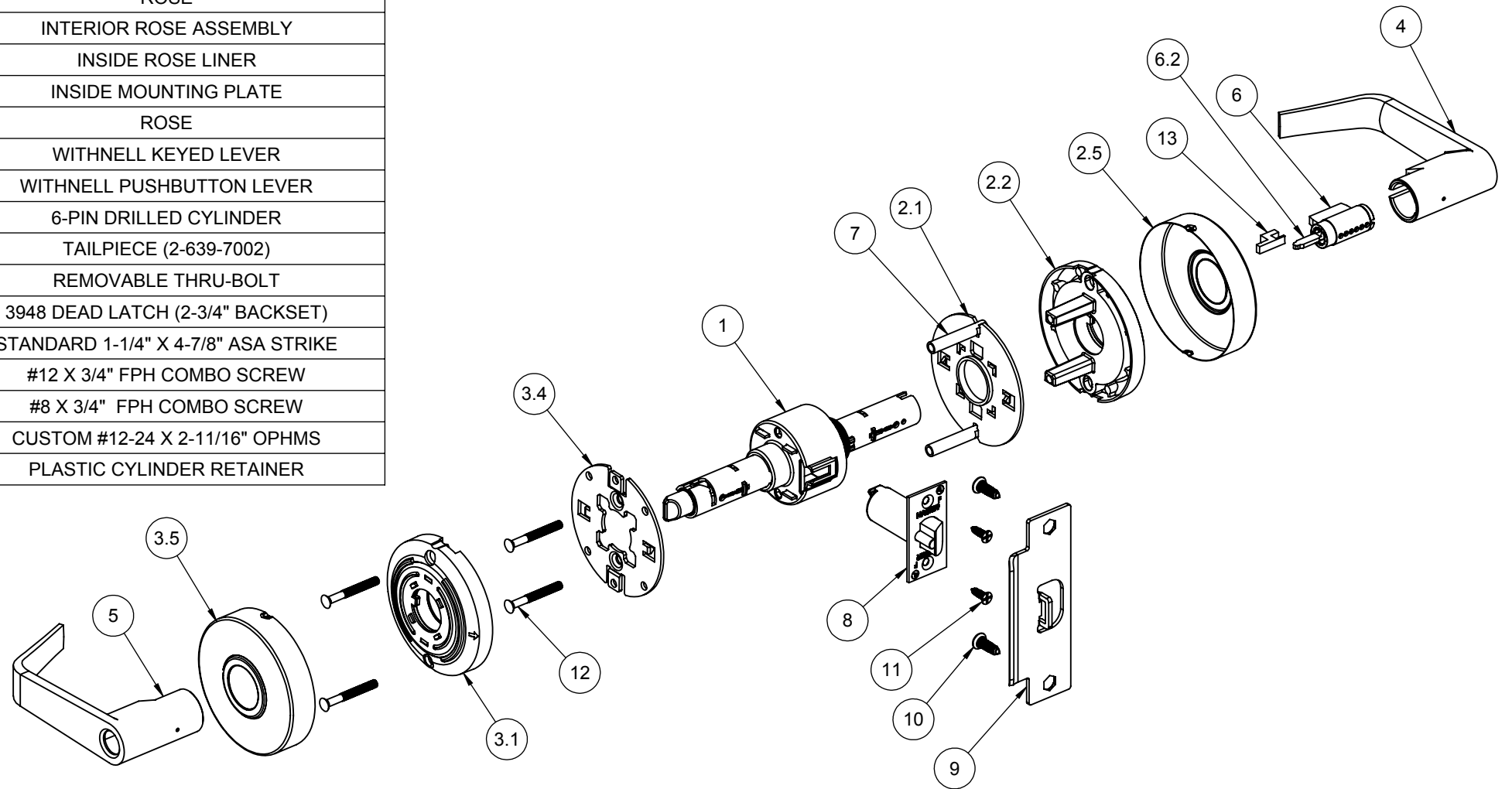


ITEM NO.	QTY.	FILE NAME	DESCRIPTION
1	1	S-LS00926	LOCKSET CHASSIS - 53 FUNCTION
2	1	S-LS00924	EXTERIOR ROSE ASSEMBLY
2.1	1	S-LS00287	OUTSIDE MOUNTING PLATE
2.2	1	S-LS00282	OUTSIDE ROSE LINER
2.5	1	S-LS00901	ROSE
3	1	S-LS00923	INTERIOR ROSE ASSEMBLY
3.1	1	S-LS00282	INSIDE ROSE LINER
3.4	1	S-LS00286	INSIDE MOUNTING PLATE
3.5	1	S-LS00901	ROSE
4	1	S-LS00277	WITHNELL KEYED LEVER
5	1	S-LS00277	WITHNELL PUSHBUTTON LEVER
6	1	S-LS00617	6-PIN DRILLED CYLINDER
6.2	1	S-LS00214	TAILPIECE (2-639-7002)
7	2	S-LS00284	REMOVABLE THRU-BOLT
8	1	S-LS00306	3948 DEAD LATCH (2-3/4" BACKSET)
9	1	S-LS00236	STANDARD 1-1/4" X 4-7/8" ASA STRIKE
10	2	S-LS00882	#12 X 3/4" FPH COMBO SCREW
11	2	S-LS00882	#8 X 3/4" FPH COMBO SCREW
12	4	S-LS00884	CUSTOM #12-24 X 2-11/16" OPHMS
13	1	S-LS00289	PLASTIC CYLINDER RETAINER



NOTE 1: (2) KEYS PROVIDED
NOTE 2: WITHNELL LEVER SHOWN, ARCHER OPTIONAL



PROPRIETARY & CONFIDENTIAL
THE INFORMATION CONTAINED IN THIS DRAWING IS THE SOLE PROPERTY OF HAGER COMPANIES. ANY REPRODUCTION IN PART OR AS A WHOLE WITHOUT THE WRITTEN PERMISSION OF HAGER COMPANIES IS PROHIBITED.

HAGER RESERVES THE RIGHT TO MAKE DESIGN CHANGES WITHOUT NOTICE. CALL HAGER ENGINEERING AT 1-800-325-9995 FOR THE LATEST REVISION DATE OF TEMPLATE.

MATERIAL	Material <not specified>
FINISH	-
DO NOT SCALE DRAWING	

DRAWN	MRJ	5/5/2010
ENG. APPR.	-	-
TOLERANCES:		
FRACTIONAL: ±0.015"		
ANGULAR: MACH: ± 1° BEND: ±1°		
TWO PLACE DECIMAL: ±0.01"		
THREE PLACE DECIMAL: ±0.004"		

2553		GRADE 2 - ENTRY LEVERSET	
SIZE	DWG. NO.	REV.	
B	S-LS00927	-	
SCALE:1:8	WEIGHT: 2.63	SHEET 1 OF 1	