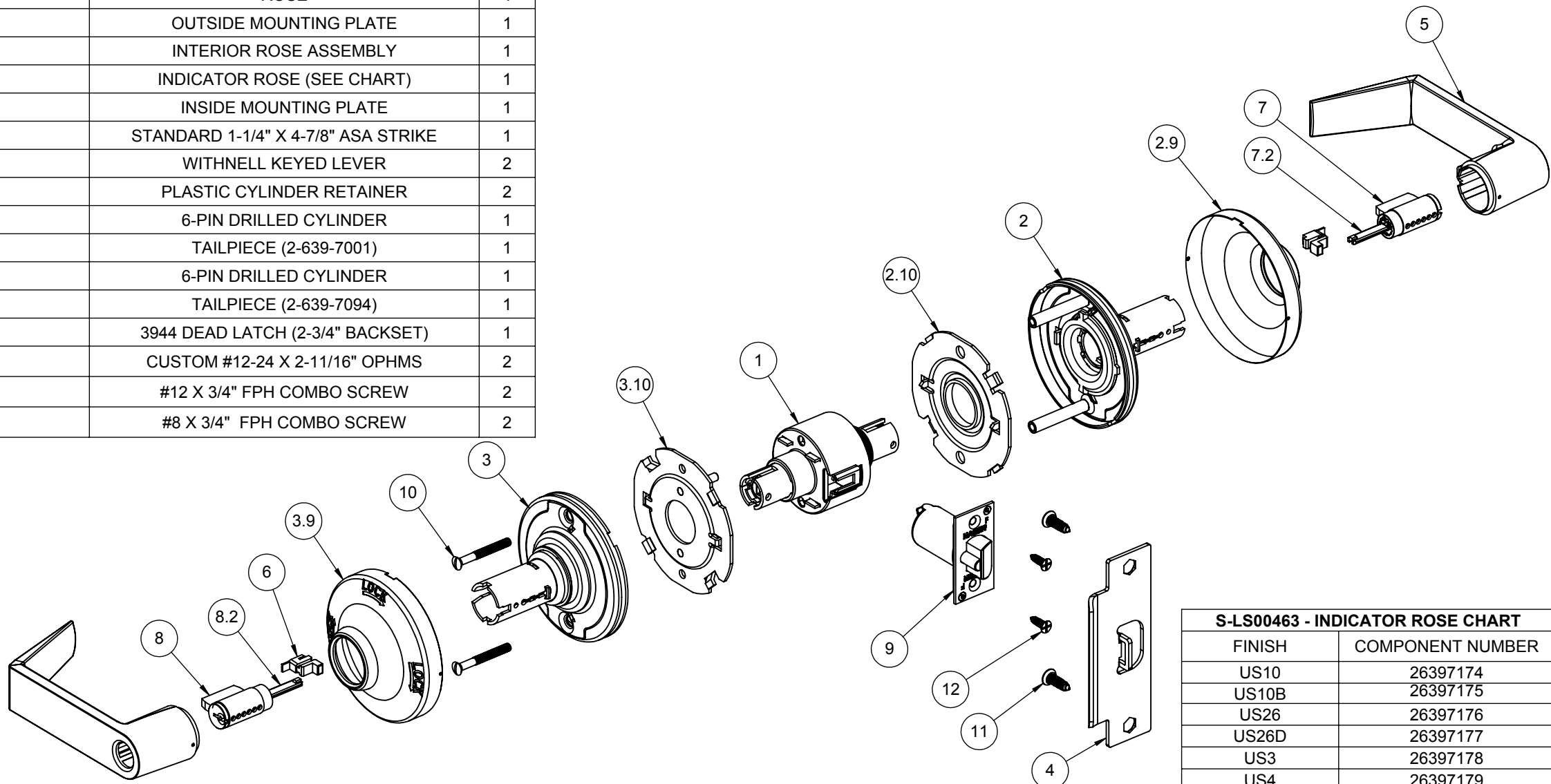



ITEM NO.	FILE NUMBER	DESCRIPTION	QTY.
1	S-LS00644	LOCKSET CHASSIS - 95 FUNCTION	1
2	S-LS00699	EXTERIOR ROSE ASSEMBLY	1
2.9	S-LS00463	ROSE	1
2.10	S-LS00461	OUTSIDE MOUNTING PLATE	1
3	S-LS00699	INTERIOR ROSE ASSEMBLY	1
3.9	S-LS00463	INDICATOR ROSE (SEE CHART)	1
3.10	S-LS00461	INSIDE MOUNTING PLATE	1
4	S-LS00236	STANDARD 1-1/4" X 4-7/8" ASA STRIKE	1
5	S-LS00689	WITHNELL KEYED LEVER	2
6	S-LS00142	PLASTIC CYLINDER RETAINER	2
7	S-LS00617	6-PIN DRILLED CYLINDER	1
7.2	S-LS00213	TAILPIECE (2-639-7001)	1
8	S-LS00617	6-PIN DRILLED CYLINDER	1
8.2	S-LS00348	TAILPIECE (2-639-7094)	1
9	S-LS00608	3944 DEAD LATCH (2-3/4" BACKSET)	1
10	S-LS00884	CUSTOM #12-24 X 2-11/16" OPHMS	2
11	S-LS00882	#12 X 3/4" FPH COMBO SCREW	2
12	S-LS00882	#8 X 3/4" FPH COMBO SCREW	2



S-LS00463 - INDICATOR ROSE CHART	
FINISH	COMPONENT NUMBER
US10	26397174
US10B	26397175
US26	26397176
US26D	26397177
US3	26397178
US4	26397179

NOTE 1: (2) KEYS PROVIDED  
 NOTE 2: WITHNELL LEVER SHOWN, OTHERS OPTIONAL

 <b>PROPRIETARY &amp; CONFIDENTIAL</b> THE INFORMATION CONTAINED IN THIS DRAWING IS THE SOLE PROPERTY OF HAGER COMPANIES. ANY REPRODUCTION IN PART OR AS A WHOLE WITHOUT THE WRITTEN PERMISSION OF HAGER COMPANIES IS PROHIBITED.	HAGER RESERVES THE RIGHT TO MAKE DESIGN CHANGES WITHOUT NOTICE. CALL HAGER ENGINEERING AT 1-800-325-9995 FOR THE LATEST REVISION DATE OF TEMPLATE.	MATERIAL	Material <not specified>	DRAWN	MRJ	11/29/2010	<b>3495</b> <b>GRADE 1 - INTRUDER CLASSROOM LEVERSET WITH INDICATOR</b>			
		FINISH	-	ENG. APPR.	-	-		SIZE	DWG. NO.	
		DO NOT SCALE DRAWING		TOLERANCES:		FRACTIONAL: ±0.015"		<b>B</b>	<b>S-LS01061</b>	
						ANGULAR: MACH: ±1° BEND: ±1°				REV.
				TWO PLACE DECIMAL: ±0.01"						
				THREE PLACE DECIMAL: ±0.004"		WEIGHT: 2.14				
						SHEET 1 OF 1				