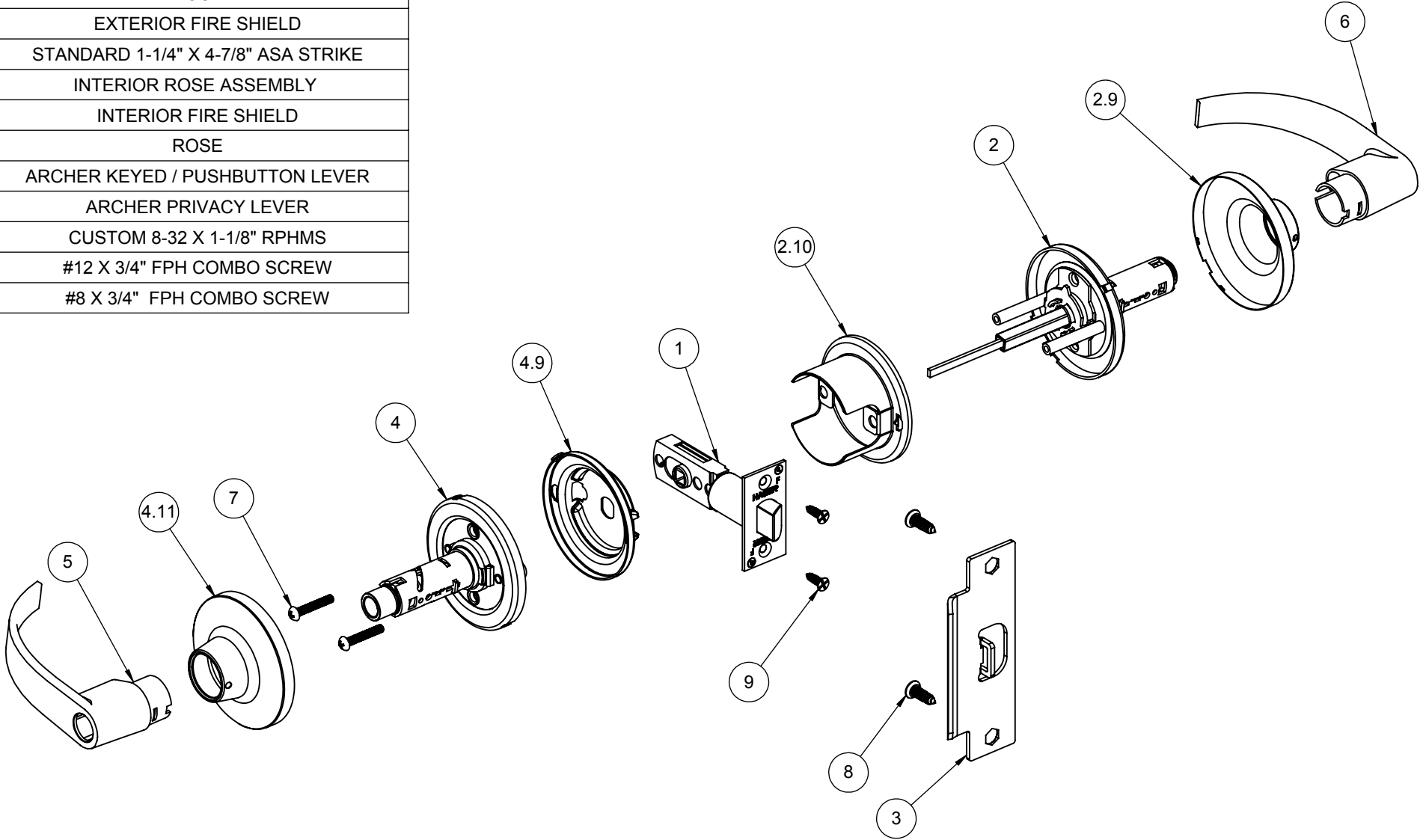



ITEM NO.	QTY.	FILE NAME	DESCRIPTION
1	1	S-LS00519	3951 ADJ SPRING LATCH
2	1	S-LS00505	EXTERIOR ROSE ASSEMBLY
2.9	1	S-LS00494	ROSE
2.10	1	S-LS00493	EXTERIOR FIRE SHIELD
3	1	S-LS00236	STANDARD 1-1/4" X 4-7/8" ASA STRIKE
4	1	S-LS00505	INTERIOR ROSE ASSEMBLY
4.9	1	S-LS00526	INTERIOR FIRE SHIELD
4.11	1	S-LS00494	ROSE
5	1	S-LS00496	ARCHER KEYED / PUSHBUTTON LEVER
6	1	S-LS00496	ARCHER PRIVACY LEVER
7	2	Round Head Screw_AI	CUSTOM 8-32 X 1-1/8" RPHMS
8	2	S-LS00882	#12 X 3/4" FPH COMBO SCREW
9	2	S-LS00882	#8 X 3/4" FPH COMBO SCREW



NOTE: ARCHER LEVER SHOWN, OTHERS OPTIONAL

 HAGER COMPANIES ST. LOUIS, MISSOURI	PROPRIETARY & CONFIDENTIAL THE INFORMATION CONTAINED IN THIS DRAWING IS THE SOLE PROPERTY OF HAGER COMPANIES. ANY REPRODUCTION IN PART OR AS A WHOLE WITHOUT THE WRITTEN PERMISSION OF HAGER COMPANIES IS PROHIBITED.	HAGER RESERVES THE RIGHT TO MAKE DESIGN CHANGES WITHOUT NOTICE. CALL HAGER ENGINEERING AT 1-800-325-9995 FOR THE LATEST REVISION DATE OF TEMPLATE.	DRAWN MRJ 8/20/2009			3640 GRADE 2 - PRIVACY LEVERSET (TUBULAR)		
			ENG. APPR. - -					
			MATERIAL			Q.A.		
			FINISH			TOLERANCES: FRACTIONAL: ±0.015" ANGULAR: MACH: ± 1° BEND: ±1° TWO PLACE DECIMAL: ±0.01" THREE PLACE DECIMAL: ±0.004"		
			DO NOT SCALE DRAWING					
			SIZE	DWG. NO.	REV.			
			B	S-LS00871	01			
			SCALE: 1:12		WEIGHT:			
					SHEET 1 OF 1			