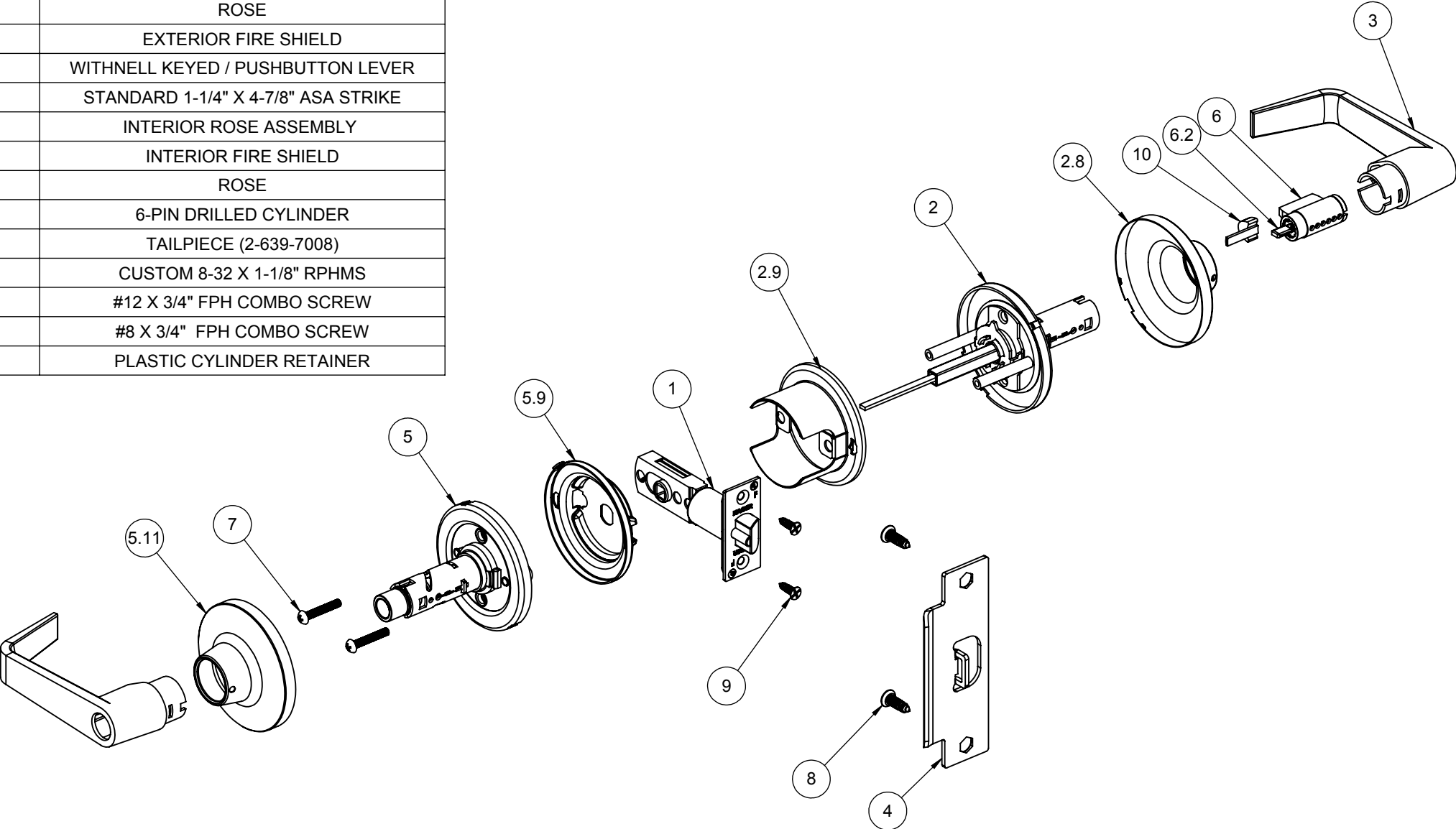



ITEM NO.	QTY.	DRAWING NO	DESCRIPTION
1	1	S-LS00519	3952 ADJ DEAD LATCH
2	1	S-LS00505	EXTERIOR ROSE ASSEMBLY
2.8	1	S-LS00494	ROSE
2.9	1	S-LS00493	EXTERIOR FIRE SHIELD
3	2	S-LS00490	WITHNELL KEYED / PUSHBUTTON LEVER
4	1	S-LS00236	STANDARD 1-1/4" X 4-7/8" ASA STRIKE
5	1	S-LS00505	INTERIOR ROSE ASSEMBLY
5.9	1	S-LS00526	INTERIOR FIRE SHIELD
5.11	1	S-LS00494	ROSE
6	1	S-LS00617	6-PIN DRILLED CYLINDER
6.2	1	S-LS00220	TAILPIECE (2-639-7008)
7	2	Round Head Screw_Al	CUSTOM 8-32 X 1-1/8" RPHMS
8	2	S-LS00882	#12 X 3/4" FPH COMBO SCREW
9	2	S-LS00882	#8 X 3/4" FPH COMBO SCREW
10	1	S-LS00816	PLASTIC CYLINDER RETAINER



NOTE 1: (2) KEYS PROVIDED
NOTE 2: WITHNELL LEVER SHOWN, OTHERS OPTIONAL

 HAGER COMPANIES ST. LOUIS, MISSOURI	PROPRIETARY & CONFIDENTIAL THE INFORMATION CONTAINED IN THIS DRAWING IS THE SOLE PROPERTY OF HAGER COMPANIES. ANY REPRODUCTION IN PART OR AS A WHOLE WITHOUT THE WRITTEN PERMISSION OF HAGER COMPANIES IS PROHIBITED.	HAGER RESERVES THE RIGHT TO MAKE DESIGN CHANGES WITHOUT NOTICE. CALL HAGER ENGINEERING AT 1-800-325-9995 FOR THE LATEST REVISION DATE OF TEMPLATE.	DRAWN			3653					
			MRJ			9/20/2009					
			ENG. APPR.			-					
			Q.A.								
			MATERIAL			TOLERANCES:					
FINISH			FRACTIONAL: ±0.015" ANGULAR: MACH: ±1° BEND: ±1° TWO PLACE DECIMAL: ±0.01" THREE PLACE DECIMAL: ±0.004"			SIZE		DWG. NO.		REV.	
DO NOT SCALE DRAWING						B		S-LS00870		02	
						SCALE:1:12		WEIGHT:		SHEET 1 OF 1	