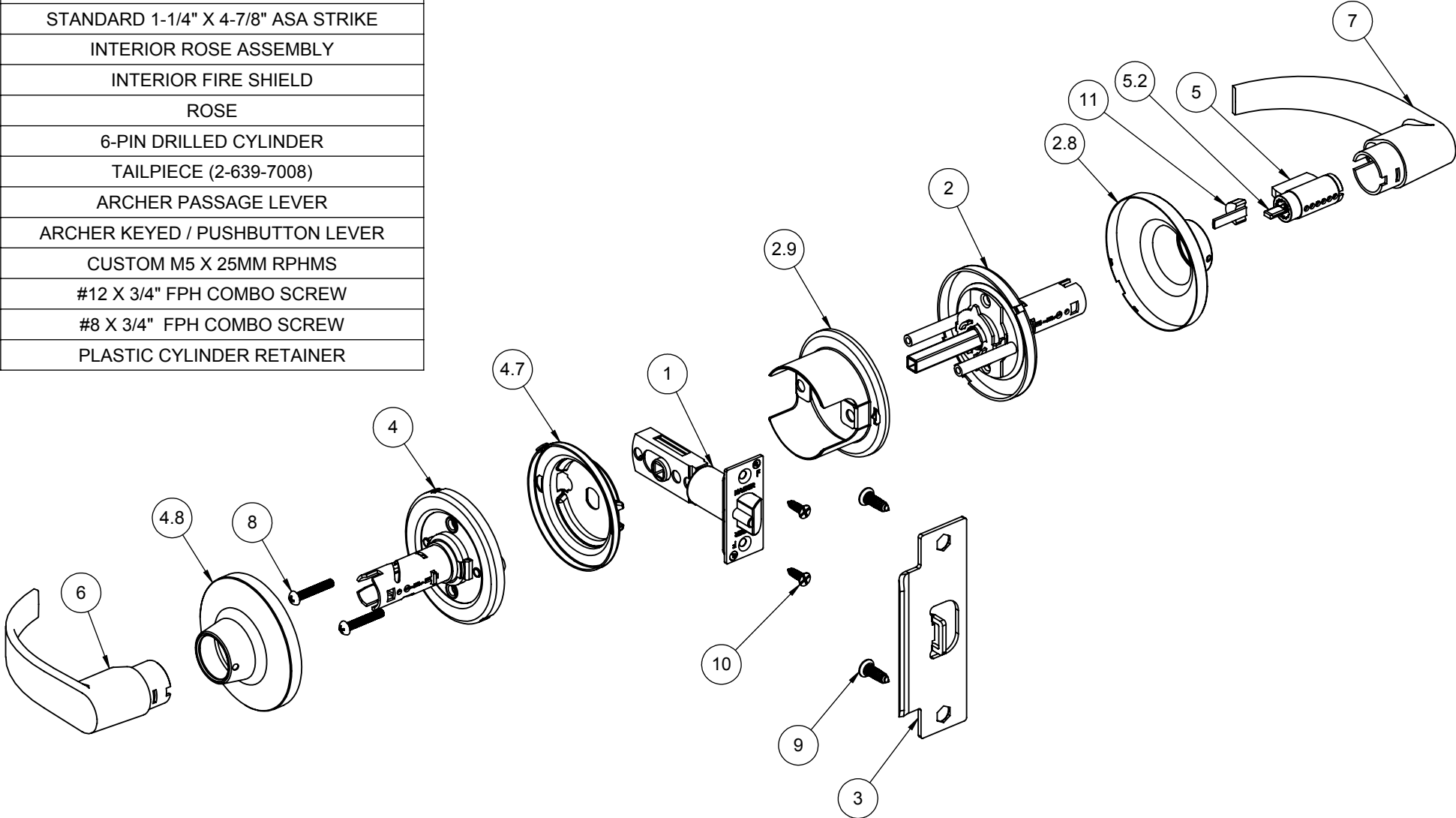



ITEM NO.	QTY.	DRAWING NO	DESCRIPTION
1	1	S-LS00519	3952 ADJ DEAD LATCH
2	1	S-LS00505	EXTERIOR ROSE ASSEMBLY
2.8	1	S-LS00494	ROSE
2.9	1	S-LS00493	EXTERIOR FIRE SHIELD
3	1	S-LS00236	STANDARD 1-1/4" X 4-7/8" ASA STRIKE
4	1	S-LS00505	INTERIOR ROSE ASSEMBLY
4.7	1	S-LS00526	INTERIOR FIRE SHIELD
4.8	1	S-LS00494	ROSE
5	1	S-LS00617	6-PIN DRILLED CYLINDER
5.2	1	S-LS00220	TAILPIECE (2-639-7008)
6	1	S-LS00496	ARCHER PASSAGE LEVER
7	1	S-LS00496	ARCHER KEYED / PUSHBUTTON LEVER
8	2	Round Head Screw_Al	CUSTOM M5 X 25MM RPHMS
9	2	S-LS00882	#12 X 3/4" FPH COMBO SCREW
10	2	S-LS00882	#8 X 3/4" FPH COMBO SCREW
11	1	S-LS00816	PLASTIC CYLINDER RETAINER



NOTE 1: (2) KEYS PROVIDED
NOTE 2: ARCHER LEVER SHOWN, OTHERS OPTIONAL

 HAGER <small>COMPANIES ST. LOUIS, MISSOURI</small>	PROPRIETARY & CONFIDENTIAL THE INFORMATION CONTAINED IN THIS DRAWING IS THE SOLE PROPERTY OF HAGER COMPANIES. ANY REPRODUCTION IN PART OR AS A WHOLE WITHOUT THE WRITTEN PERMISSION OF HAGER COMPANIES IS PROHIBITED.	HAGER RESERVES THE RIGHT TO MAKE DESIGN CHANGES WITHOUT NOTICE. CALL HAGER ENGINEERING AT 1-800-325-9995 FOR THE LATEST REVISION DATE OF TEMPLATE.			3670 GRADE 2 - CLASSROOM LEVERSET (TUBULAR)						
		MATERIAL	DRAWN	MRJ	8/20/2009	SIZE DWG. NO. B S-LS00868 SCALE:1:12 WEIGHT: SHEET 1 OF 1					
			ENG. APPR.	-	-						
		FINISH	Q.A.						TOLERANCES: FRACTIONAL: ±0.015" ANGULAR: MACH:± 1° BEND:± 1° TWO PLACE DECIMAL: ±0.01" THREE PLACE DECIMAL: ±0.004"		
			DO NOT SCALE DRAWING								
			REV. 02								