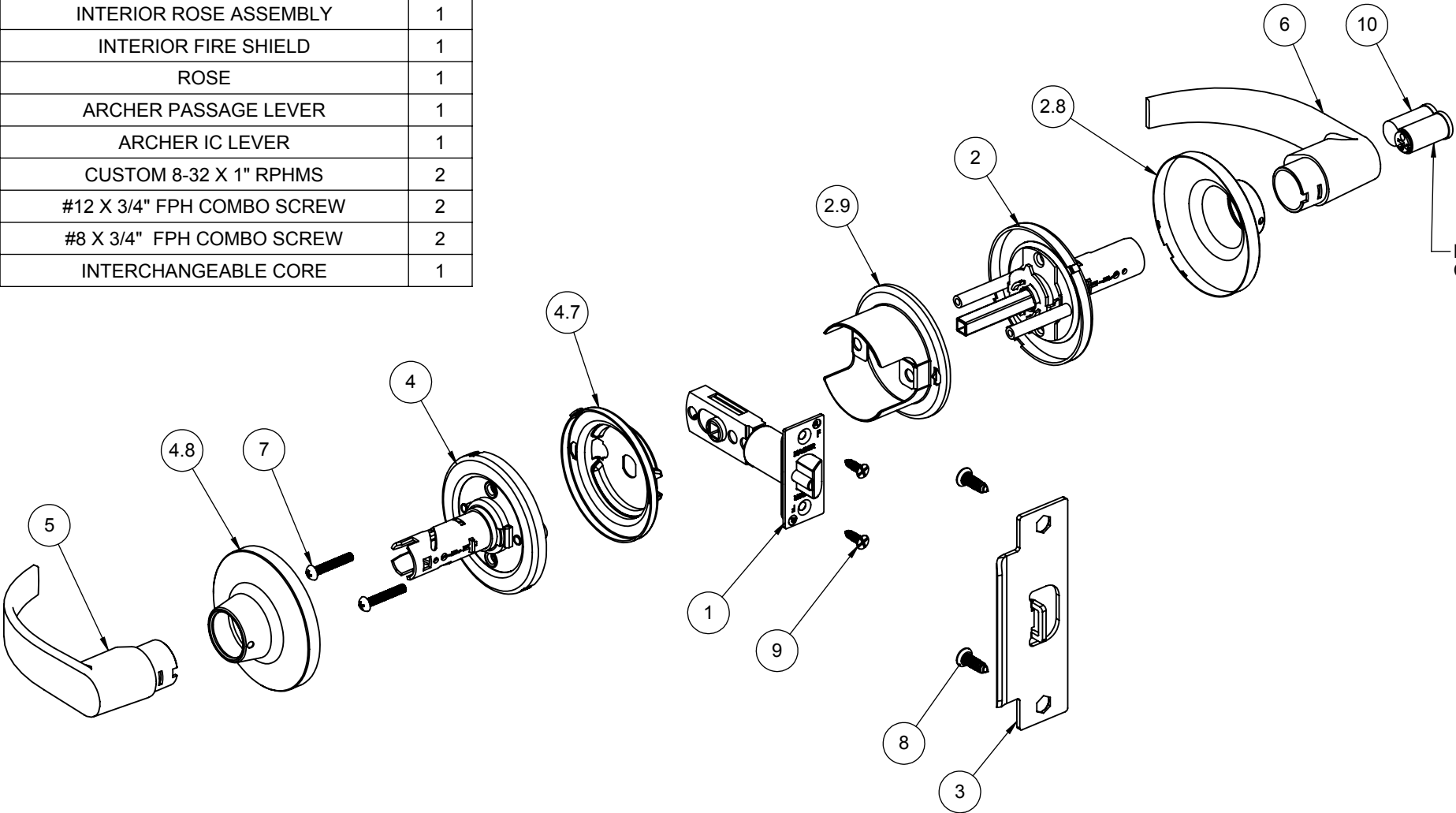



ITEM NO.	FILE NAME	DESCRIPTION	QTY.
1	S-LS00519	3952 ADJ DEAD LATCH	1
2	S-LS00505	EXTERIOR ROSE ASSEMBLY	1
2.8	S-LS00494	ROSE	1
2.9	S-LS00493	EXTERIOR FIRE SHIELD	1
3	S-LS00236	STANDARD 1-1/4" X 4-7/8" ASA STRIKE	1
4	S-LS00505	INTERIOR ROSE ASSEMBLY	1
4.7	S-LS00526	INTERIOR FIRE SHIELD	1
4.8	S-LS00494	ROSE	1
5	S-LS00496	ARCHER PASSAGE LEVER	1
6	S-LS00496	ARCHER IC LEVER	1
7	Round Head Screw_AI	CUSTOM 8-32 X 1" RPHMS	2
8	S-LS00882	#12 X 3/4" FPH COMBO SCREW	2
9	S-LS00882	#8 X 3/4" FPH COMBO SCREW	2
10	S-LS00550	INTERCHANGEABLE CORE	1



NOTE: ARCHER LEVER SHOWN, OTHERS OPTIONAL

 <div>PROPRIETARY & CONFIDENTIAL</div> <div>THE INFORMATION CONTAINED IN THIS DRAWING IS THE SOLE PROPERTY OF HAGER COMPANIES. ANY REPRODUCTION IN PART OR AS A WHOLE WITHOUT THE WRITTEN PERMISSION OF HAGER COMPANIES IS PROHIBITED.</div>	HAGER RESERVES THE RIGHT TO MAKE DESIGN CHANGES WITHOUT NOTICE. CALL HAGER ENGINEERING AT 1-800-325-9995 FOR THE LATEST REVISION DATE OF TEMPLATE.			DRAWN	MRJ	8/20/2009	3670			
			MATERIAL	ENG. APPR.		-	-	GRADE 2 - CLASSROOM IC LEVERSET (TUBULAR)		
				Q.A.						
	FINISH		TOLERANCES: FRACTIONAL: ±0.015" ANGULAR: MACH: ±1° BEND: ±1° TWO PLACE DECIMAL: ±0.01" THREE PLACE DECIMAL: ±0.004"					SIZE	DWG. NO.	REV.
	DO NOT SCALE DRAWING							B	S-LS00869	01
								SCALE: 1:12		SHEET 1 OF 1
								WEIGHT:		