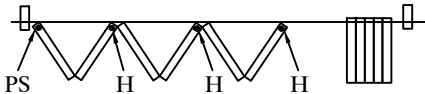
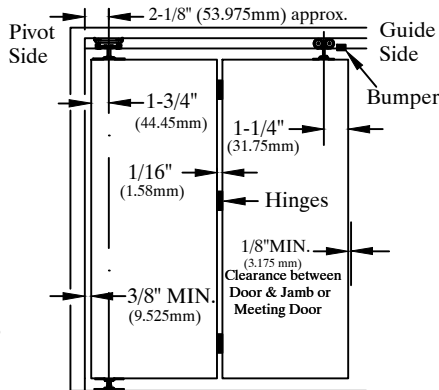
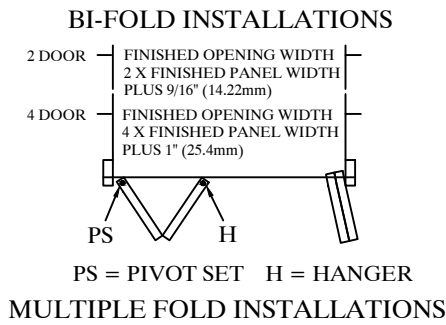


# 9860-SERIES HEAVY DUTY HARDWARE

## FOLDING DOOR INSTALLATION INSTRUCTIONS

- FOR BIFOLD DOORS WEIGHING UP TO 50 LBS. (22.72 kg) EACH
- FOR MULTIPLE FOLD DOORS WEIGHING UP TO 30 LBS. (13.64 kg) EACH



### MULTIPLE FOLDING DOORS EDGE HUNG

Finished opening width = Door Panel total width plus 9/16" (14.22mm) for pivot pair, plus 3/8" (9.525mm) for each additional pair.

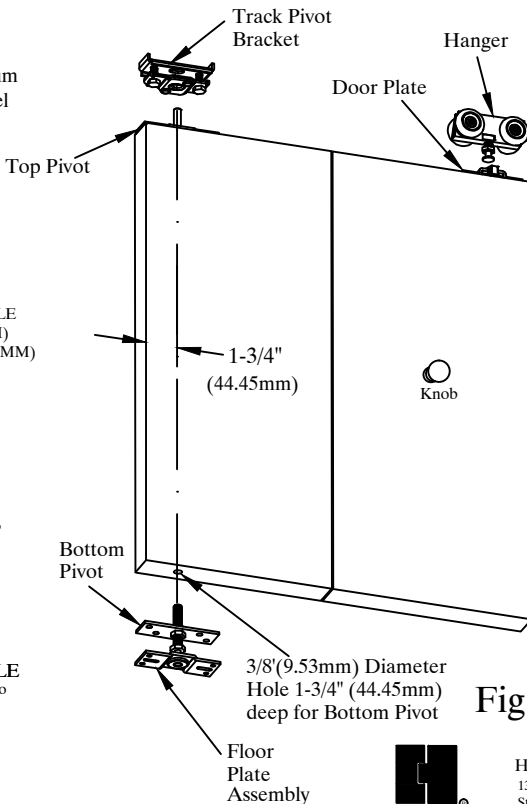
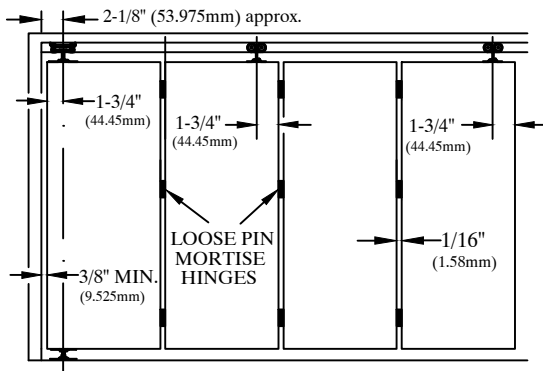
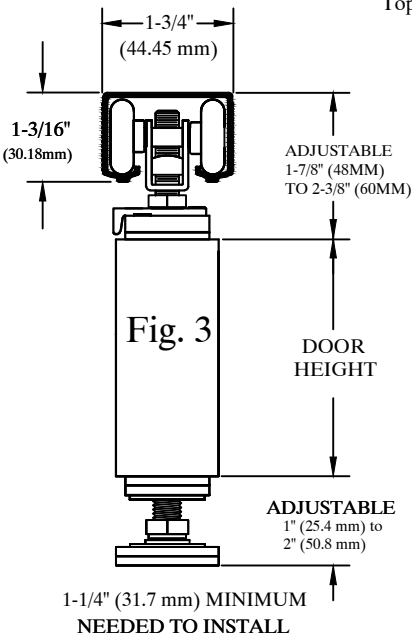
Mount hangers on every other door as shown by H

For convenience in hanging doors, heavy duty loose pin hinges should be used. (Included)

### DOORWAY HEIGHT

Door Height plus:  
Minimum of 3-3/8" (85.73mm)  
maximum of 4" (101.6mm)

NOTE: When using optional Roller Guide & Bottom Guide Channel, use door height plus 3-5/8" minimum 4-1/8" maximum when Bottom Guide Channel is mounted recessed, flush with finished floor. Use door height plus 4-1/4" minimum 4-3/4" maximum if Bottom Guide Channel is surface mounted.



## INSTALLATION INSTRUCTIONS: TRACK MOUNTING:

1. Insert Hanger Trolleys in Track.
2. **FOR 2 PANEL DOORWAY**  
Mount Track flush against Jamb at Guide Side, not Pivot Side. (see Fig.1)

### FOR 4 OR MULTIPLE PANEL DOORWAY

- Center Track in opening.
3. Track Pivot Bracket should be placed so center of the Pivot Slot is approximately 2-1/8" (53.975mm) from Jamb as shown (Fig.1)

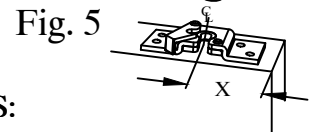
## HARDWARE INSTALLATION:

4. Mount Pivots 1-3/4" (44.45mm) from door edge as shown in Fig.4 Mount Hanger Door Plates and Hinges as shown in Fig's 1, 2 or 5, so that **CENTER OF HANGER BOLT** is in correct location:

**BI-FOLD: 1-1/4" from Door edge**  
**MULTI-FOLD: 1-3/4" from Door edge**

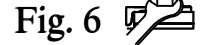
5. Install Pivot Door by inserting Top Pivot into Track Pivot Bracket, then lower door so Bottom Pivot engages Bottom Pivot Assembly. Hang Guide Door by engaging Door Plate Assembly to center bolt of Hanger Trolley.

X = 1-1/4" for Bi-fold  
X = 1-3/4" for Multi-fold



## ADJUSTMENTS:

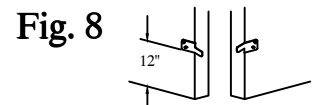
6. Move Track Pivot Bracket and Bottom Pivot Assembly to establish desired Jamb clearance. Tighten both securely.
7. Adjust height by turning Bottom Pivot Adjusting Bolt.
8. With doors in closed position, adjust Hanger Adjusting Bolt so weight is evenly distributed across the top of the track for smooth and even folding action.(Fig.6)



9. Install Bumper by backing out screw until flush. Hook Bumper over lip on end of Track, next to Hanger. (Fig. 7.) Adjust so wheels contact Bumper when doors are in closed position. Tighten securely.



10. Install Aligners on 4-Door Sets approximately 12" from bottom backside of doors. Adjust in or out until doors "snap" closed, then tighten screws. (Fig. 8.)



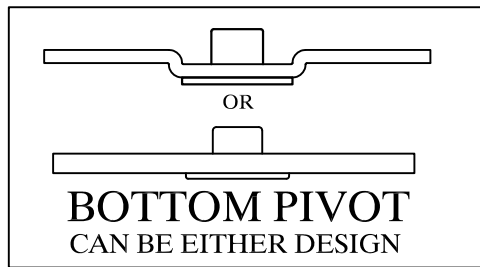
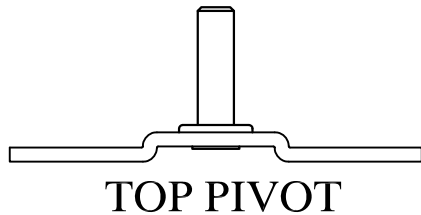
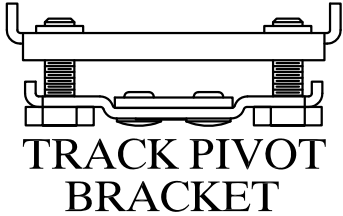
HAGER HINGE CO.  
139 Victor St.  
St. Louis, Mo. 63104

9860-INST  
REV. 10-29-12

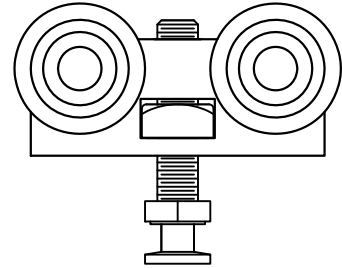
# PARTS LISTING 9860/9861 TRACK SETS

## PARTS LISTING 9894 HARDWARE SET

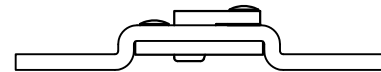
NOTE: PARTS SHOWN ARE FOR REF ONLY  
NOT ALL PARTS ARE IN ALL SETS.



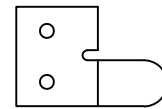
ADJUSTING BOLT



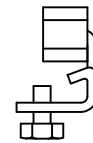
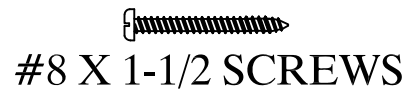
HANGER TROLLY  
W/ADJUSTING BOLT



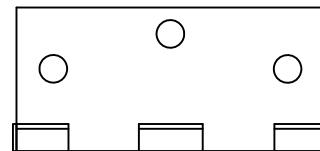
DOOR PLATE



ALIGNER



SNUGGER



HINGES

NOTE: HINGES NOT  
INCLUDED WITH 9894 SETS